

Templates

All-Over Shirt Printing

All-over prints use a combo template, where all garment sizes are combined into one file. Refer to the guides in-file to see the print areas for different size ranges.

Garment Size

Laying Out Your Artwork

Most customers find it easier to have one design that works across all sizes. Using the universal template gives you a reference of the print area for different garment sizes on your order.

Ensure that any important elements fit in the area for the smallest shirt size on your order.

If your artwork requires that each size has a custom design, save out multiple template files with the sizes clearly labeled in the file names. We'll line those up with the sizes in your order.

Concerns?

Don't hesitate to hit us up!

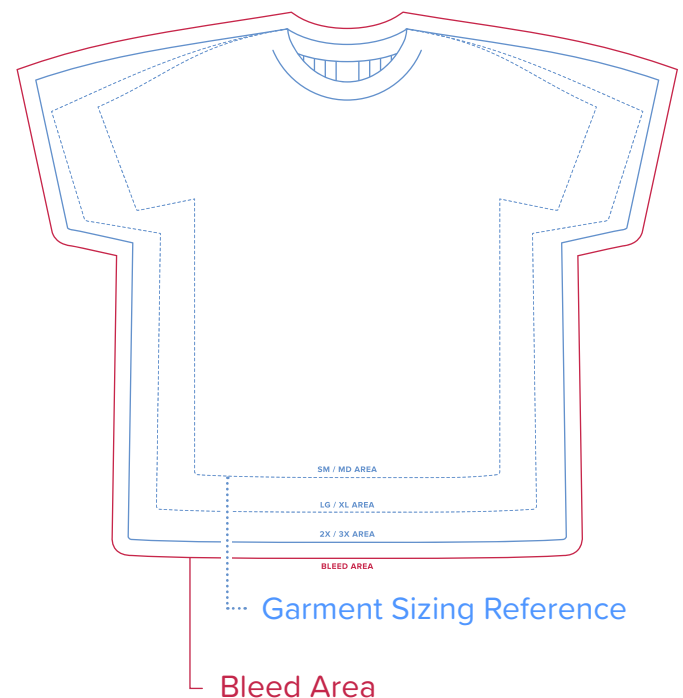
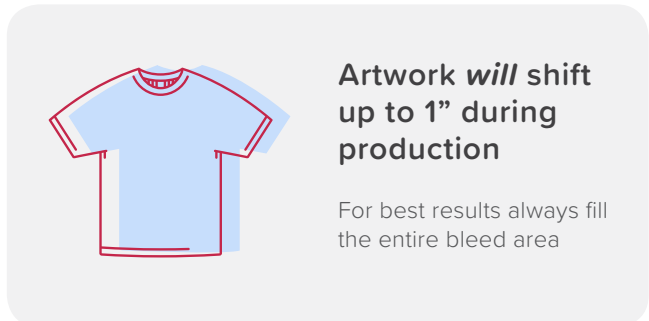
Click support@jakprints.com Call 877.246.3132

File Requirements

150 DPI Resolution in CMYK Color Mode File Formats: PDF / TIFF / EPS / PSD / AI / PNG

Adobe Illustrator | .ai

- Put your artwork in the 'PLACE ARTWORK HERE' layer.
- Outline all text.
- Embed any images via the Links panel.
- Note any Safety and Bleed included in the template.
- For best results, do not unlock template layers.



Adobe Photoshop | .psd

- Do not flatten the template on your artwork.
- Embed any linked smart objects.
- Do not modify or unlock template layers
- Do not flatten the apparel color into your artwork, it's best to leave the background transparent.

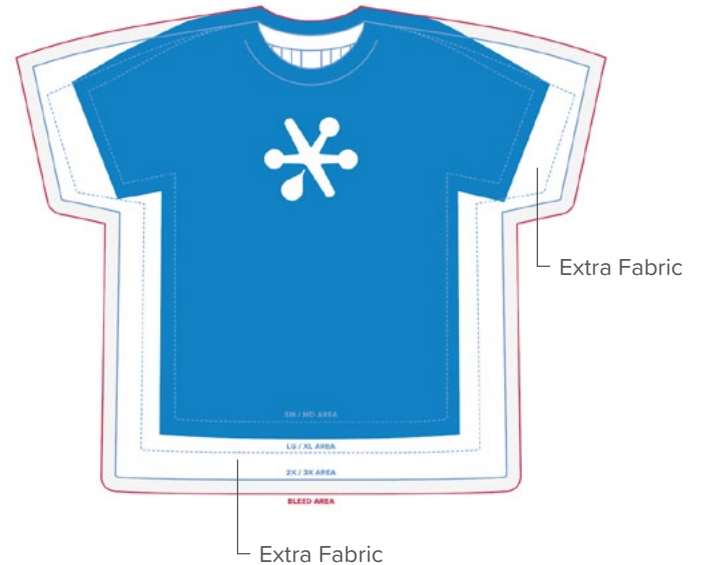
Examples

All-Over Shirt Printing

The following examples were printed from the same artwork file based on the medium sizing.

In the photos below, you can see how the artwork prints in the same location, but the larger garment has additional fabric on the sleeves, sides and bottom.

For best results fill your image to the bleed area, making sure any important elements are within the area for the specific size you're ordering.



Size | MED



Size | 2 XL



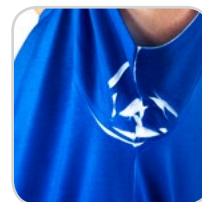
Expected Results



Single-Sided shirts will show the blank white garment on the backside.



Shifting on press will happen. Avoid matching to seams.



Imperfections around armpits and seams are normal. Design accordingly.